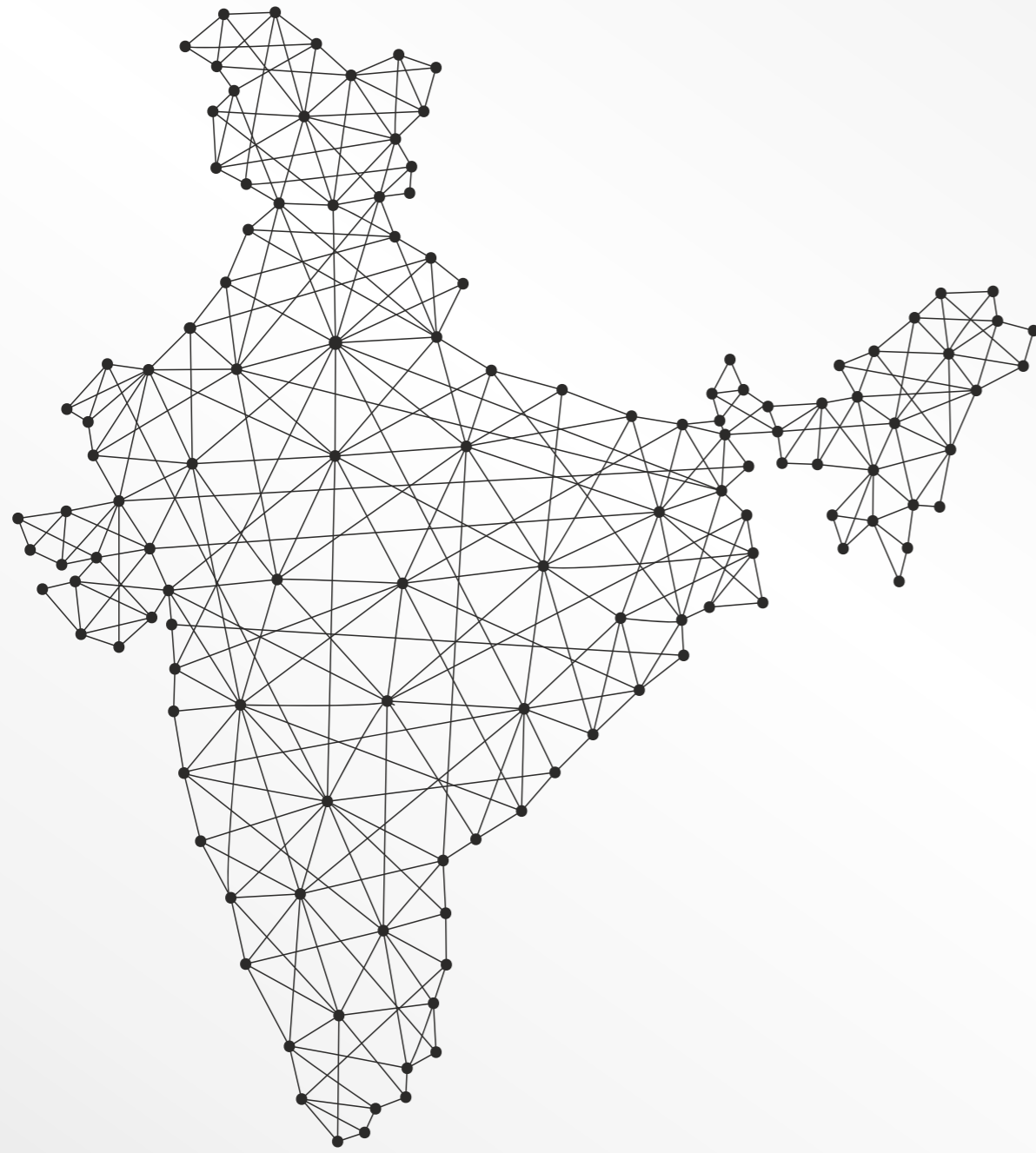


Nationwide Sales & Service Presence



LED Display Wall - Outdoor

Impact Series

A perfect combination of looks, brightness, durability & ruggedness that offers a perfect image quality.



Corporate Office: A-66, Sector-4, Noida, District Gautam Budh Nagar, Uttar Pradesh - 201301, India | **Phone:** +91-120-4051700, 4051800
Email: info@globusinfocom.com | **www.globusinfocom.com**

Communication
made
Impactful



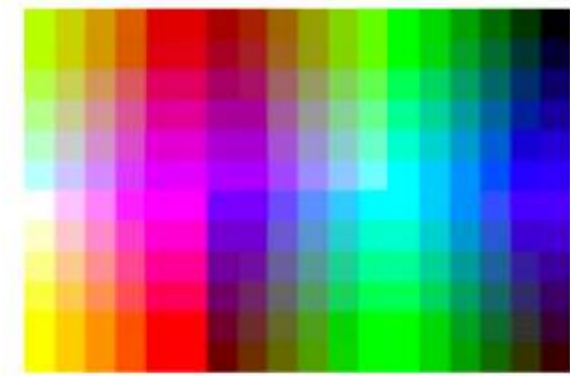
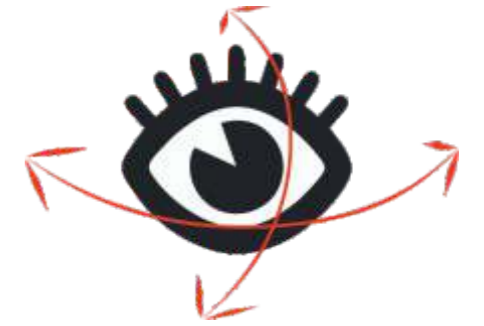
Design with Quality

Our product passes through multiple levels of test to bring the best & fine quality. The body of our LED Display Wall is made up of die-casting aluminium material as it contains high dimensional stability, this material is light weight and rust proof that extends longevity and reliability.



Wide Viewing Angle

Most of the LED walls have been created keeping in mind the on-axis viewers only but we focus on on-axis viewer as well as viewer at wider angles. Hence, viewer at any angle will get to see only "Picture Perfect".



True Colors

State of the art technology enables true to life images.



Fan Less and Noise Less Solution

Our latest range of LEDs are smart enough and maintain the temperature within. These LEDs have no cooling fans which results into noiseless performance.

High Resolution, Brightness & Contrast

High Resolution, Brightness and Contrast Ratio are three most important features of any LED Display Wall. Engineered with all these features, our LED Wall produces most soothing and class apart images and video quality.



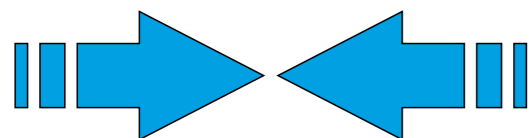
Less Power Consumption

We believe in creating environment friendly products & solutions. Keeping in mind the same, our LED Display Wall performs multiple functions but consumes very less power.



No to Bezel, Yes to Clarity

Multiple modules are tiled together to create one wall. Our modules are bezel less. Our panels / modules are interlocked tightly with each other leading to a seamless display surface without any gaping.



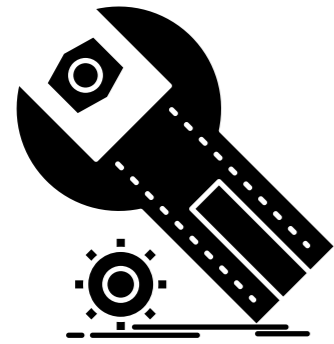
Front & Rear Maintenance

Our LED Display Walls are quite easy to maintain from front and rear both. Conventional LED walls need to be handled from their backside every time any problem occurred. However, latest LED Display Walls give you leverage to trouble shoot from front without disturbing any wiring.

Withstands extreme climate

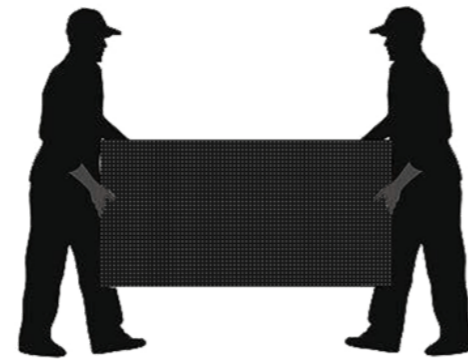
Module of hollowed-out design is made for efficient heat dissipation to stand various severe weathers in outdoors.

Fully waterproof module can stand the stormy weather in outdoors.



Smart Remote Management

Using the remote management software, manage and troubleshoot Globus LED Display Walls even without physically accessing display walls placed at a remote location.



Easy Installation

With ultra slim and light weight design, these LEDs are easy to install even by one person.



Multiple Mounting Options

We at Globus understand the needs of our clients and that is why our fine pitch LED display wall comes with multiple mounting options. According to the demand of the area LED Display Wall can be mounted.

Application Areas



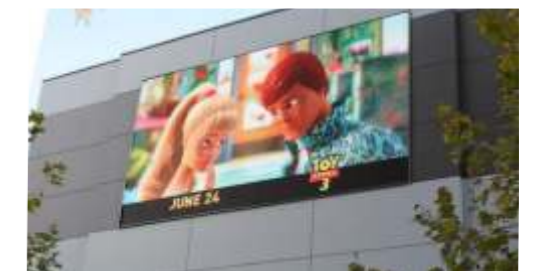
Public Display Areas



Government Establishments



Stadiums & Arenas



Advertisement



and many more...

Technical Specifications

Models	Impact OL39US-U	Impact OL48US-U	Impact OL59US-U
Environment	Outdoor		
Maintenance	Front / Rear		
Pixel Pitch	3.9mm	4.8mm	5.9mm
LED Type	3-in-1 SMD		
Curve	(Outer)-5°~+5°(Inter) Optional		
Pixel Configuration	1 Red, 1 Green, 1 Blue		
Brightness	5500 cd/m ²		
Driving Method	Constant Current Drive		
Brightness Control	Manual/Automatic		
Contrast Ratio	5000:1		
Color	68.7 Billion		
Color Temperature	2000-9300K (Adjustable using software)		
Viewing Angle	H: 80°; V:70°		
Viewing Distance	≥3.9m	≥4.8m	≥5.9m
Aspect Ratio	1:1/ 1:2		
Pixel Density	65,536 pixels / m ²	43,264 pixels / m ²	28,224 pixels / m ²
Pixels Per Panel	128 x 128 Dots 128 x 256 Dots	104 x 104 Dots 104 x 208 Dots	84 x 84 Dots 84 x 168 Dots
Material	Die-casting Aluminum		
Ingress Protection	IP65		
Operating Temperature/ Humidity	-25°C~+55°C/10~90%RH		
Storage Temperature/ Humidity	-30°C~+60°C/10~90%RH		
Acoustic Noise	Fanless operation		
Video Frame Rate	50/60Hz		
Refresh Rate	1920Hz		
Control Input Type	USB		
Calibration	Support brightness and chroma		
Input Signal	DVI/ HDMI/ VGA/ SDI/ DP/ AV/ S-Video etc.		
Input Voltage	100-240V AC		
Input Power Frequency	50~60Hz		
Input Power	75W (Typical); 220W (Max.) / Panel (for 500mm x 500mm) 140W (Typical); 420W (Max.) / Panel (for 500mm x 1000mm)		
LED Life Time	≥100,000 Hours		
Standard Mounting Configuration	Fixed, Floor-mounted, Hanged		
Data Interconnection	CAT5 Cable; multi-mode fiber; single mode fiber		
Cabinet Size	W500mm x H500mm x D84.15mm / W500mm x H1000mm x D84.15mm		
Area	0.25/ 0.5 m ²		
Module Size	W250mm x H250mm		
Gap Between Modules	Seamless, zero bezel width		
Weight	7.5 kg/panel; 15 kg/panel		

Models	Impact OL67US3-U	Impact OL83US3-U	Impact OL10US3-U
Environment	Outdoor		
Maintenance	Front / Rear		
Pixel Pitch	6.7mm	8.3mm	10mm
LED Type	3-in-1 SMD		
Curve	(Outer)-5°~+5°(Inter) Optional		
Pixel Configuration	1 Red, 1 Green, 1 Blue		
Brightness	6500 cd/m ²		
Driving Method	Constant Current Drive		
Brightness Control	Manual/Automatic		
Contrast Ratio	12200:1	18500:1	
Colors	4.4 Trillion		
Color Temperature	2000-9300K (Adjustable)		
Viewing Angle	H:150°; V:130°	H:170°; V:150°	
Viewing Distance	≥6.7m	≥8.3m	≥10m
Aspect Ratio	8:9		
Pixel Density	22,500 pixels / m ²	14,400 pixels / m ²	10,000 pixels / m ²
Pixels Per Panel	120 x 135 Dots	96 x 108 Dots	80 x 90 Dots
Material	Profile Aluminum		
Ingress Protection	IP65 / IP54		
Operating Temperature/ Humidity	-25°C~+55°C/10~90%RH		
Storage Temperature/ Humidity	-30°C~+60°C/10~90%RH		
Acoustic Noise	Fanless operation		
Video Frame Rate	50/60Hz		
Refresh Rate	1920Hz		
Control Input Type	USB		
Calibration	Support brightness and chroma		
Input Signal	DVI/ HDMI/ VGA/ SDI/ DP/ AV/ S-Video etc.		
Input Voltage	100-240V AC		
Input Power Frequency	47~63Hz		
Input Power	234W (Typical); 700W (Max.) / m ²		
LED Life Time	≥100,000 Hours		
Standard Mounting Configuration	Fixed		
Data Interconnection	CAT5 Cable; multi-mode fiber; single mode fiber		
Cabinet Size	W800mm x H900mm x D96mm		
Area	0.72 m ²		
Module Size	W400mm x H300mm		
Gap Between Modules	Seamless, zero bezel width		
Weight	17.5 kg/panel		

Technical Specifications

Models	Impact OL39US-U1	Impact OL48US-U1	Impact OL59US-U1
Environment	Outdoor		
Maintenance	Front / Rear		
Pixel Pitch	3.9mm	4.8mm	5.9mm
LED Type	3-in-1 SMD		
Curve	(Outer)-5°~+5°(Inter) Optional		
Pixel Configuration	1 Red, 1 Green, 1 Blue		
Brightness	6000 cd/m ²		
Driving Method	Constant Current Drive		
Brightness Control	Manual/Automatic		
Contrast Ratio	5000:1		
Color	68.7 Billion		
Color Temperature	2000-9300K (Adjustable using software)		
Viewing Angle	H: 80°; V:70°		
Viewing Distance	≥3.9m	≥4.8m	≥5.9m
Aspect Ratio	1:1/ 1:2		
Pixel Density	65,536 pixels / m ²	43,264 pixels / m ²	28,224 pixels / m ²
Pixels Per Panel	128 x 128 Dots 128 x 256 Dots	104 x 104 Dots 104 x 208 Dots	84 x 84 Dots 84 x 168 Dots
Material	Die-casting Aluminum		
Ingress Protection	IP65		
Operating Temperature/ Humidity	-25°C~+55°C/10~90%RH		
Storage Temperature/ Humidity	-30°C~+60°C/10~90%RH		
Acoustic Noise	Fanless operation		
Video Frame Rate	50/60Hz		
Refresh Rate	1920Hz		
Control Input Type	USB		
Calibration	Support brightness and chroma		
Input Signal	DVI/ HDMI/ VGA/ SDI/ DP/ AV/ S-Video etc.		
Input Voltage	100-240V AC		
Input Power Frequency	50~60Hz		
Input Power	75W (Typical); 220W (Max.) / Panel (for 500mm x 500mm) 140W (Typical); 420W (Max.) / Panel (for 500mm x 1000mm)		
LED Life Time	≥100,000 Hours		
Standard Mounting Configuration	Fixed, Floor-mounted, Hanged		
Data Interconnection	CAT5 Cable; multi-mode fiber; single mode fiber		
Cabinet Size	W500mm x H500mm x D84.15mm / W500mm x H1000mm x D84.15mm		
Area	0.25/ 0.5 m ²		
Module Size	W250mm x H250mm		
Gap Between Modules	Seamless, zero bezel width		
Weight	7.5 kg/panel; 15 kg/panel		

Models	Impact OL67US3-U1	Impact OL83US3-U1	Impact OL10US3-U1
Environment	Outdoor		
Maintenance	Front / Rear		
Pixel Pitch	6.7mm	8.3mm	10mm
LED Type	3-in-1 SMD		
Curve	(Outer)-5°~+5°(Inter) Optional		
Pixel Configuration	1 Red, 1 Green, 1 Blue		
Brightness	7500 cd/m ²		
Driving Method	Constant Current Drive		
Brightness Control	Manual/Automatic		
Contrast Ratio	12200:1	18500:1	
Colors	4.4 Trillion		
Color Temperature	2000-9300K (Adjustable)		
Viewing Angle	H:150°; V:130°	H:170°; V:150°	
Viewing Distance	≥6.7m	≥8.3m	≥10m
Aspect Ratio	8:9		
Pixel Density	22,500 pixels / m ²	14,400 pixels / m ²	10,000 pixels / m ²
Pixels Per Panel	120 x 135 Dots	96 x 108 Dots	80 x 90 Dots
Material	Profile Aluminum		
Ingress Protection	IP65 / IP54		
Operating Temperature/ Humidity	-25°C~+55°C/10~90%RH		
Storage Temperature/ Humidity	-30°C~+60°C/10~90%RH		
Acoustic Noise	Fanless operation		
Video Frame Rate	50/60Hz		
Refresh Rate	1920Hz		
Control Input Type	USB		
Calibration	Support brightness and chroma		
Input Signal	DVI/ HDMI/ VGA/ SDI/ DP/ AV/ S-Video etc.		
Input Voltage	100-240V AC		
Input Power Frequency	47~63Hz		
Input Power	234W (Typical); 700W (Max.) / m ²		
LED Life Time	≥100,000 Hours		
Standard Mounting Configuration	Fixed		
Data Interconnection	CAT5 Cable; multi-mode fiber; single mode fiber		
Cabinet Size	W800mm x H900mm x D96mm		
Area	0.72 m ²		
Module Size	W400mm x H300mm		
Gap Between Modules	Seamless, zero bezel width		
Weight	17.5 kg/panel		

Technical Specifications

Models	Impact OL39US-U2	Impact OL48US-U2	Impact OL59US-U2
Environment	Outdoor		
Maintenance	Front / Rear		
Pixel Pitch	3.9mm	4.8mm	5.9mm
LED Type	3-in-1 SMD		
Curve	(Outer)-5°~+5°(Inter) Optional		
Pixel Configuration	1 Red, 1 Green, 1 Blue		
Brightness	6500 cd/m ²		
Driving Method	Constant Current Drive		
Brightness Control	Manual/Automatic		
Contrast Ratio	5000:1		
Color	68.7 Billion		
Color Temperature	2000-9300K (Adjustable using software)		
Viewing Angle	H: 80°; V:70°		
Viewing Distance	≥3.9m	≥4.8m	≥5.9m
Aspect Ratio	1:1/ 1:2		
Pixel Density	65,536 pixels / m ²	43,264 pixels / m ²	28,224 pixels / m ²
Pixels Per Panel	128 x 128 Dots 128 x 256 Dots	104 x 104 Dots 104 x 208 Dots	84 x 84 Dots 84 x 168 Dots
Material	Die-casting Aluminum		
Ingress Protection	IP65		
Operating Temperature/ Humidity	-25°C~+55°C/10~90%RH		
Storage Temperature/ Humidity	-30°C~+60°C/10~90%RH		
Acoustic Noise	Fanless operation		
Video Frame Rate	50/60Hz		
Refresh Rate	1920Hz		
Control Input Type	USB		
Calibration	Support brightness and chroma		
Input Signal	DVI/ HDMI/ VGA/ SDI/ DP/ AV/ S-Video etc.		
Input Voltage	100-240V AC		
Input Power Frequency	50~60Hz		
Input Power	75W (Typical); 220W (Max.) / Panel (for 500mm x 500mm) 140W (Typical); 420W (Max.) / Panel (for 500mm x 1000mm)		
LED Life Time	≥100,000 Hours		
Standard Mounting Configuration	Fixed, Floor-mounted, Hanged		
Data Interconnection	CAT5 Cable; multi-mode fiber; single mode fiber		
Cabinet Size	W500mm x H500mm x D84.15mm / W500mm x H1000mm x D84.15mm		
Area	0.25/ 0.5 m ²		
Module Size	W250mm x H250mm		
Gap Between Modules	Seamless, zero bezel width		
Weight	7.5 kg/panel; 15 kg/panel		

Models	Impact OL67US3-U2	Impact OL83US3-U2	Impact OL10US3-U2
Environment	Outdoor		
Maintenance	Front / Rear		
Pixel Pitch	6.7mm	8.3mm	10mm
LED Type	3-in-1 SMD		
Curve	(Outer)-5°~+5°(Inter) Optional		
Pixel Configuration	1 Red, 1 Green, 1 Blue		
Brightness	8500 cd/m ²		
Driving Method	Constant Current Drive		
Brightness Control	Manual/Automatic		
Contrast Ratio	12200:1	18500:1	
Colors	4.4 Trillion		
Color Temperature	2000-9300K (Adjustable)		
Viewing Angle	H:150°; V:130°	H:170°; V:150°	
Viewing Distance	≥6.7m	≥8.3m	≥10m
Aspect Ratio	8:9		
Pixel Density	22,500 pixels / m ²	14,400 pixels / m ²	10,000 pixels / m ²
Pixels Per Panel	120 x 135 Dots	96 x 108 Dots	80 x 90 Dots
Material	Profile Aluminum		
Ingress Protection	IP65 / IP54		
Operating Temperature/ Humidity	-25°C~+55°C/10~90%RH		
Storage Temperature/ Humidity	-30°C~+60°C/10~90%RH		
Acoustic Noise	Fanless operation		
Video Frame Rate	50/60Hz		
Refresh Rate	1920Hz		
Control Input Type	USB		
Calibration	Support brightness and chroma		
Input Signal	DVI/ HDMI/ VGA/ SDI/ DP/ AV/ S-Video etc.		
Input Voltage	100-240V AC		
Input Power Frequency	47~63Hz		
Input Power	234W (Typical); 700W (Max.) / m ²		
LED Life Time	≥100,000 Hours		
Standard Mounting Configuration	Fixed		
Data Interconnection	CAT5 Cable; multi-mode fiber; single mode fiber		
Cabinet Size	W800mm x H900mm x D96mm		
Area	0.72 m ²		
Module Size	W400mm x H300mm		
Gap Between Modules	Seamless, zero bezel width		
Weight	17.5 kg/panel		

Technical Specifications

Models	Impact OL39US-U3	Impact OL48US-U3	Impact OL59US-U3
Environment	Outdoor		
Maintenance	Front / Rear		
Pixel Pitch	3.9mm	4.8mm	5.9mm
LED Type	3-in-1 SMD		
Curve	(Outer)-5°~+5°(Inter) Optional		
Pixel Configuration	1 Red, 1 Green, 1 Blue		
Brightness	7000 cd/m ²		
Driving Method	Constant Current Drive		
Brightness Control	Manual/Automatic		
Contrast Ratio	5000:1		
Color	68.7 Billion		
Color Temperature	2000-9300K (Adjustable using software)		
Viewing Angle	H: 80°; V:70°		
Viewing Distance	≥3.9m	≥4.8m	≥5.9m
Aspect Ratio	1:1/ 1:2		
Pixel Density	65,536 pixels / m ²	43,264 pixels / m ²	28,224 pixels / m ²
Pixels Per Panel	128 x 128 Dots 128 x 256 Dots	104 x 104 Dots 104 x 208 Dots	84 x 84 Dots 84 x 168 Dots
Material	Die-casting Aluminum		
Ingress Protection	IP65		
Operating Temperature/ Humidity	-25°C~+55°C/10~90%RH		
Storage Temperature/ Humidity	-30°C~+60°C/10~90%RH		
Acoustic Noise	Fanless operation		
Video Frame Rate	50/60Hz		
Refresh Rate	1920Hz		
Control Input Type	USB		
Calibration	Support brightness and chroma		
Input Signal	DVI/ HDMI/ VGA/ SDI/ DP/ AV/ S-Video etc.		
Input Voltage	100-240V AC		
Input Power Frequency	50~60Hz		
Input Power	75W (Typical); 220W (Max.) / Panel (for 500mm x 500mm) 140W (Typical); 420W (Max.) / Panel (for 500mm x 1000mm)		
LED Life Time	≥100,000 Hours		
Standard Mounting Configuration	Fixed, Floor-mounted, Hanged		
Data Interconnection	CAT5 Cable; multi-mode fiber; single mode fiber		
Cabinet Size	W500mm x H500mm x D84.15mm / W500mm x H1000mm x D84.15mm		
Area	0.25/ 0.5 m ²		
Module Size	W250mm x H250mm		
Gap Between Modules	Seamless, zero bezel width		
Weight	7.5 kg/panel; 15 kg/panel		

Models	Impact OL67US3-U3	Impact OL83US3-U3	Impact OL10US3-U3
Environment	Outdoor		
Maintenance	Front / Rear		
Pixel Pitch	6.7mm	8.3mm	10mm
LED Type	3-in-1 SMD		
Curve	(Outer)-5°~+5°(Inter) Optional		
Pixel Configuration	1 Red, 1 Green, 1 Blue		
Brightness	10,000 cd/m ²		
Driving Method	Constant Current Drive		
Brightness Control	Manual/Automatic		
Contrast Ratio	12200:1	18500:1	
Colors	4.4 Trillion		
Color Temperature	2000-9300K (Adjustable)		
Viewing Angle	H:150°; V:130°	H:170°; V:150°	
Viewing Distance	≥6.7m	≥8.3m	≥10m
Aspect Ratio	8:9		
Pixel Density	22,500 pixels / m ²	14,400 pixels / m ²	10,000 pixels / m ²
Pixels Per Panel	120 x 135 Dots	96 x 108 Dots	80 x 90 Dots
Material	Profile Aluminum		
Ingress Protection	IP65 / IP54		
Operating Temperature/ Humidity	-25°C~+55°C/10~90%RH		
Storage Temperature/ Humidity	-30°C~+60°C/10~90%RH		
Acoustic Noise	Fanless operation		
Video Frame Rate	50/60Hz		
Refresh Rate	1920Hz		
Control Input Type	USB		
Calibration	Support brightness and chroma		
Input Signal	DVI/ HDMI/ VGA/ SDI/ DP/ AV/ S-Video etc.		
Input Voltage	100-240V AC		
Input Power Frequency	47~63Hz		
Input Power	234W (Typical); 700W (Max.) / m ²		
LED Life Time	≥100,000 Hours		
Standard Mounting Configuration	Fixed		
Data Interconnection	CAT5 Cable; multi-mode fiber; single mode fiber		
Cabinet Size	W800mm x H900mm x D96mm		
Area	0.72 m ²		
Module Size	W400mm x H300mm		
Gap Between Modules	Seamless, zero bezel width		
Weight	17.5 kg/panel		

*Due to continuous product development, the specifications may change without prior notice.
**Product image(s) are for illustrative purposes only and may differ from the actual product.