

Nationwide Sales & Service Presence



## LED Display Wall - Outdoor

Model: IMPACT IL26US-U

A perfect combination of looks, brightness, durability & ruggedness that offers a perfect image quality.



**Corporate Office:** A-66, Sector-4, Noida, District Gautam Budh Nagar, Uttar Pradesh - 201301, India | **Phone:** +91-120-4051700, 4051800  
**Email:** [info@globusinfocom.com](mailto:info@globusinfocom.com) | [www.globusinfocom.com](http://www.globusinfocom.com)

Communication  
made  
Impactful



## Design with Quality

---

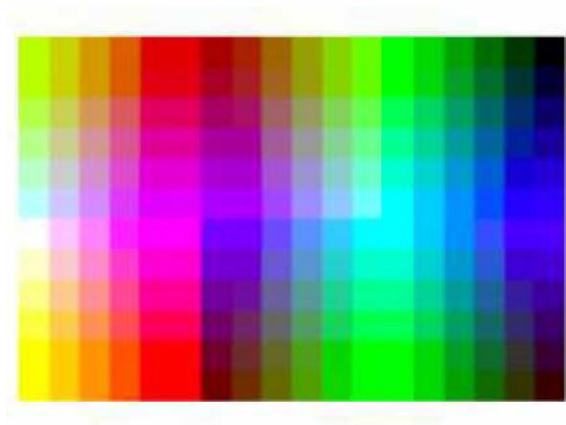
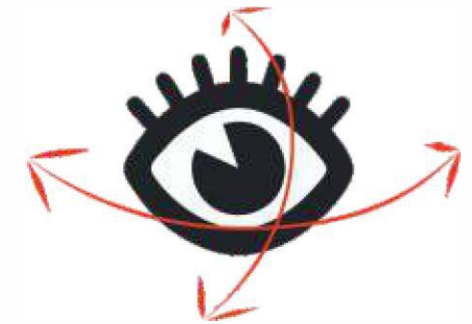
Our product passes through multiple levels of test to bring the best & fine quality. The body of our LED Display Wall is made up of die-casting aluminium material as it contains high dimensional stability, this material is light weight and rust proof that extends longevity and reliability.



## Wide Viewing Angle

---

Most of the LED walls have been created keeping in mind the on-axis viewers only but we focus on on-axis viewer as well as viewer at wider angles. Hence, viewer at any angle will get to see only "Picture Perfect".



## True Colors

---

State of the art technology enables true to life images.



## Fan Less and Noise Less Solution

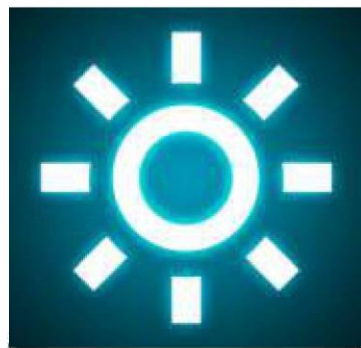
---

Our latest range of LEDs are smart enough and maintain the temperature within. These LEDs have no cooling fans which results into noiseless performance.

## High Resolution, Brightness & Contrast

---

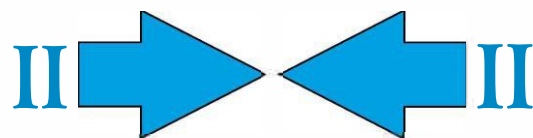
High Resolution, Brightness and Contrast Ratio are three most important features of any LED Display Wall. Engineered with all these features, our LED Wall produces most soothing and class apart images and video quality.



## Less Power Consumption

---

We believe in creating environment friendly products & solutions. Keeping in mind the same, our LED Display Wall performs multiple functions but consumes very less power.



## No to Bezel, Yes to Clarity

---

Multiple modules are tiled together to create one wall. Our modules are bezel less. Our panels/ modules are interlocked tightly with each other leading to a seamless display surface without any gaping.



## Front & Rear Maintenance

---

Our LED Display Walls are quite easy to maintain from front and rear both. Conventional LED walls need to be handled from their backside every time any problem occurred. However, latest LED Display Walls give you leverage to trouble shoot from front without disturbing any wiring.

# Technical Specifications

Indoor LED wall	IMPACT IL26US-U
LED Type	SMD
Pixel	2 mm
Module Resolution	160 X 80 (12800)
Pixel Density	250000 pixels / m²
Frame Frequency	>_60 HZ
Input signal - Controller	DVI / DP, HDMI
Brightness Correction	Brightness Correction through software - Module by Module. Cabinet by cabinet
Brightness CD/m.ng	1000 nits
Operating Hours	24/7
Max Power (W/Sqm)	600W/m2
Avg Power (W/Sqm) Grey	200W/m2
Refresh rate	3840 Hz
Working Temperature	0°C~40 °C
Input Voltage	AC 110-240V 50-60Hz
MTBF (Mean Time Between Failure)	Non-Stop Running upto 5000 hrs
Life Span	100,000 hours
Protection Level	IP30
Viewing Angel	Horizontal 140" Vertical 140
Certifications	BIS, CE SSS& RoHS, FCC

LED Wall Controller	
Input	1x Audio, 1x DVI/HDMI
Output	2x LED Outputs over Ethernet
Control	1x USB, 1x URT in , 1x URT out
Accessory	1x 4 pin Light Sensor Interface
Input Voltage	AC-100-240V-50/60HZ
Overall power consumption	16W
Working Temperature	-20 Degree C ~+60 degree C
Working Humidity	0%~95%

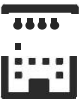
# Application Areas



Public Display Areas



Government Establishments



Conference halls and Auditoriums



Command & Control Centers and Paramilitary Forces



and many more...

\*Due to continuous product development, the specifications may change without prior notice.  
\*\*Product image(s) are for illustrative purposes only and may differ from the actual product.