

Nationwide Sales & Service Presence



## LED Display Wall - Outdoor

Impact Series

A perfect combination of looks, brightness, durability & ruggedness that offers a perfect image quality.

## Design with Quality

---

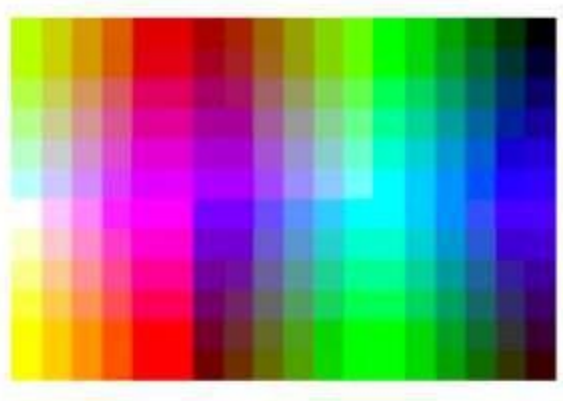
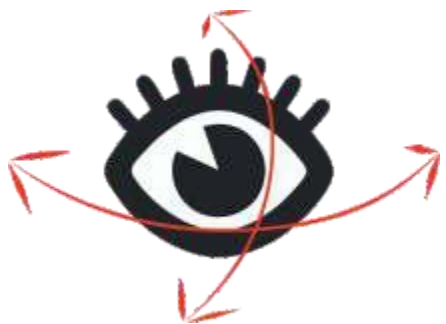
Our product passes through multiple levels of test to bring the best & fine quality. The body of our LED Display Wall is made up of die-casting aluminium material as it contains high dimensional stability, this material is light weight and rust proof that extends longevity and reliability.



## Wide Viewing Angle

---

Most of the LED walls have been created keeping in mind the on-axis viewers only but we focus on on-axis viewer as well as viewer at wider angles. Hence, viewer at any angle will get to see only "Picture Perfect".



## True Colors

---

State of the art technology enables true to life images.



## Fan Less and Noise Less Solution

---

Our latest range of LEDs are smart enough and maintain the temperature within. These LEDs have no cooling fans which results into noiseless performance.

## High Resolution, Brightness & Contrast

---

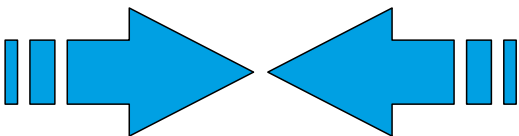
High Resolution, Brightness and Contrast Ratio are three most important features of any LED Display Wall. Engineered with all these features, our LED Wall produces most soothing and class apart images and video quality.



## Less Power Consumption

---

We believe in creating environment friendly products & solutions. Keeping in mind the same, our LED Display Wall performs multiple functions but consumes very less power.



## No to Bezel, Yes to Clarity

---

Multiple modules are tiled together to create one wall. Our modules are bezel less. Our panels / modules are interlocked tightly with each other leading to a seamless display surface without any gaping.



## Front & Rear Maintenance

---

Our LED Display Walls are quite easy to maintain from front and rear both. Conventional LED walls need to be handled from their backside every time any problem occurred. However, latest LED Display Walls give you leverage to trouble shoot from front without disturbing any wiring.



# Technical Specifications

Model	IMPACT OL83US3-U
Environment	Outdoor
Maintenance	Front and Rear
Pixel Pitch	8 mm
LED Type	3-in-1 Black SMD
Pixel Configuration	1 Red, 1 Green, 1 Blue
Drive Mode	Constant Current Drive
Brightness	10000 cd/m2
Brightness Uniformity	≥97 %
Brightness Control	Manual/Automatic
Contrast Ratio	8000:1
Color Temperature	3000-10000 K
Viewing Angle	H: 160 degree; V:140 degree
Viewing Distance	≥8.0 m
Pixel Density	15625 pixels / m²
Pixels Per Panel	128 x 96 Dots
LED Luminance Center	≤3%
Flat Surface	≤0.3 mm
High Dynamic Range	Supported
Processing Depth/ Grey Scale	14 bit
Operating Temperature	-20 Degree C ~+50 degree C
Operating Humidity	10~90%RH
Acoustic Noise	Fanless operation
IP Rating (front/Rear)	IP 65/54
Video Frame Rate	50/60Hz
Refresh Rate	≥ 1920 Hz
Installation mechanism	Easy Maintenance, self-locking mechanism for easy & fast installation with Automatic Alignment Mechanism
Input Voltage	100-240V AC
Input Power Frequency	50~60Hz
Input Power	Maximum 900 (W/m²)
LED Life Time	≥100,000 Hours
Rigging Form	Hanging/Fixed
Data Interconnection	CAT5/ CAT6 Cable Multi-mode fiber
Gap Between Modules	Seamless, zero bezel width
LED wall Size (mm) (W x H)	3840 mm x 2880 mm
Certification & Datasheet	BIS

LED Wall Controller- IMPACT DCTRL 5	
Specifications	Description
Input	1x Audio, 1x DVI
Output	2x LED Outputs over Ethernet
Control	1x USB, 1x URT in , 1x URT out
Accessory	1x 4 pin Light Sensor Interface
Input Voltage	AC-100-240V-50/60HZ
Overall power consumption	16W
Working Temperature	-20 Degree C ~+60 degree C
Working Humidity	0%~95%
Certifications	BIS

Mounting Structure for Outdoor LED wall	
Pole Mount & Mounting Structure	<p><b>a)For Pole Mount :</b> Suitable Mounting structure (mild Steel) with protect mastic primer 100 microns. Beautification of LED wall Structure with ACP sheet at top and Side of the structure having depth 450mm to avoid bird drops at screen. Approx. 3 feet foundation below ground level. LED Screen ground clearance approx. 10/12 feet from ground level or greater - / b) <b>For Mounting Structure :</b> Suitable Mounting structure (mild Steel) with protect mastic primer 100 microns. Beautification of LED wall Structure with ACP sheet at top and Side of the structure having depth 450mm to avoid bird drops at screen.</p>
Mini PC for OUTDOOR LED-Compact581R	
Parameter	Specifications
Processor	Intel Core i5 (10th Gen
Small Form Factor	Computer of 2 liters Volume
In-Built Wi-Fi /Wireless LAN Card	Inbuilt Wi-Fi / Wireless LAN Card
RAM	8 GB
SSD	256 GB SSD
Ports (Min.)	HDMI x 1, USB ports x 4, LAN Port x 1
Keyboard & Mouse	Wireless
Operating System	Windows 10
Certifications	BIS

Digital Signage Software for OUTDOOR LED	
Specifications	Description
Content Creator	Full transparency and layering.
	Enables you to create your presentation using a simple drag and drop type process.
	Unlimited free-style zones.
	User Friendly GUI to create designs and content
	Features extensive file format support and delivers smooth playback.
	Advance tickers and scrollers.
Content Manager	Smart Data Transfer updates only the changes in existing content.
	Grouping support for players.
	FTP and direct transfer.
	Secure encrypted content transfer.
	Resume Capability of Data transfer-Eliminates the need to transfer files from scratch after network breakdown.
	One-click Emergency Alerts.
Content Player	Allows to reboot, take screenshots and check player health from the central server.
	Multiple format content playback.
	Minimized hardware requirements.
	Allows to log report of presentation, playback and player health.
	Retrieves its last working state in case of power failure.
	Playbacks for presentations for touch screen kiosks and non-interactive screens.