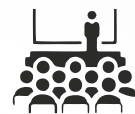


# Application Areas



Educational Institutes



Board Rooms



Training Rooms



Conference Rooms

and many more..

Nationwide Sales & Service Presence



**Corporate Office:** A-65, Sector-4, Noida, District Gautam Budh Nagar,  
Uttar Pradesh - 201301, India | **Phone:** +91-120-4051700, 4051800  
**Email:** info@globusinfocom.com | **www.globusinfocom.com**



## Video Conferencing Full HD Hybrid PTZ Camera

*Globus Impact Series*

Perfect need-based camera catering to the conferencing requirements of huddle rooms, conference rooms, auditoriums, etc. of varied dimensions and sizes. It offers a cost-effective way to connect multiple users through uninterrupted, smooth multi-site conferencing.

Communication  
made  
Impactful



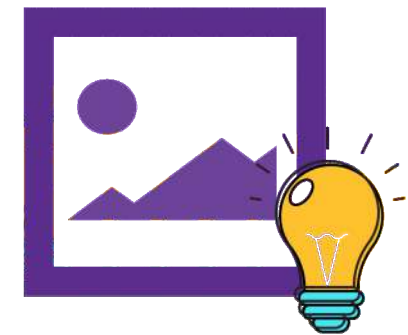


## High Resolution and Optimum Zoom

Comes with a superior and crystal-clear video resolution of 1080p which supports up to 20x of powerful optical zoom. It brings a vast range of clarity to your video conferencing while increasing the communication capability.

## Design & Construction

Solid and rugged video conferencing which imparts a premium look to your experience. It can be mounted on the top panel/monitor for better space management.



## High Quality Images in Low Light

The CMOS sensor accounts for exception performance and high quality images even in low light conditions due to its high signal-to-noise ratio.

## Auto White Balance and Brightness Control

Adjusts brightness and white balance automatically to optimize video quality. This feature helps the user attain a flawless video conferencing output.



## Technical Specification

### Full HD PTZ Video Conferencing Camera

Model	Impact  UHC6-V20
Optical Zoom	20x
Digital Zoom	16x
Camera Resolution	1080p 60fps, 1080p 30fps
Sensor	1/2.8" CMOS Sensor
Effective Pixels	2.07 MP
Scanning Mode	Progressive
Lens Focus Arrangement	f 5.5mm ~ 110mm, F1.6 ~ F3.5
Minimal Illumination	0.5 Lux @ (F1.8, AGC ON)
Shutter	1/30s ~ 1/10000s Auto / Manual
White Balance	Auto, Indoor, Outdoor, One Push, Manual/ 3000K ~ 7000K
Digital Noise Reduction	2D&3D Digital Noise Reduction
Video S/N	≥55dB
Angle of View	3.3° (tele) ~ 54.7° (Wide)
Horizontal/Vertical Rotation Range	±170 degree - Minus 30 degrees ~ Plus 90 degree
Pan /Tilt Speed per second	0.1 degrees ~ 100 degrees /0.1 degrees ~ 70 degrees
Number of Presets and accuracy	255, 0.1°
Other Features	Focus : Auto/Manual/One Push; BLC:ON/Off; WDR : Off/Dynamic level adjustment; Video Adjustment: Brightness, Color, Saturation, Contrast, Sharpness, B/W mode, Gamma curve
Video Resolution	1080p/60/59.94/ 50/30/29.97/25; 1080i/60/59.94/50; 720p/59.94/50/30/29.97/25

Device Function & Interface	
Audio Encoding	AAC audio encoding for better sound quality and smaller bandwidth
Local Storage	Local storage module directly recording to local USB flash disk
Low Light	High SNR of CMOS sensor even under low illumination conditions picture can still keep clean and clear
Remote Control	All parameters of the camera remotely controlled by the high-speed communications, handheld remote control
HD Output	HDMI x 1, USB 3.0 x 1
SD Output	CVBS: 3.5mm x1
Network Interface	RJ45: 10M/100M Ethernet Interface
Audio Interface	1-ch: 3.5mm Audio Interface, Line In
Communication Interface	RS232 In x 1, RS232 Out x 1, RS485 x 1
USB and Power Jack	USB 2.0 x 1, USB 3.0 x1

IPC Features	
Video Stream	H.265/H.264/MJPEG, Main Stream, Sub Stream
Main / Sub Stream Resolution	1920x1080,1280x720,1024x576 / 720x576, 720x480, 320x240
Baud Rate	11520 / 9600 / 4800 / 2400
Video Bit Rate and Type	32Kbps ~ 2048Kbps, Variable Rate, Fixed Rate
Frame Rate	50Hz: 1fps ~ 50fps, 60Hz: 1fps ~ 60fps
Audio Bit Rate	AAC, 96Kbps, 128Kbps, 256Kbps
Support protocols	TCP/IP, HTTP, RTSP, RTMP, Onvif, DHCP, Multicast, GB/ T28181 etc.

Physical Characteristics	
Input Voltage	DC 12V
Current Consumption	1.0A (Max)
Operating Temperature	-10°C ~ 40°C (14°F ~ 104°F)
Storage Temperature	-40°C ~ 60°C (-40°F ~ 140°F)
Power Consumption	12W (Max)

Accessories
IR remote control, cables, Power adaptor and cable, user manual

Certificate
RoHS, CE, FCC

\*Due to continuous product development, the specifications may change without prior notice.  
\*\*Product image(s) are for illustrative purposes only and may differ from the actual product.